



Photo by Paula Lobo and Leah Portis

## PROJECT SNAPSHOT

Project Name: ***Evita* at New York City Center**  
Location: **New York, NY**  
Installation Completion: **November 2019**  
Scenic Design: **Jason Sherwood**  
Lighting Design: **Bradley King**  
Costume Design: **Alejo Vietti**  
Sound Design: **Kai Harada**  
Director of Production: **Mark Mongold**  
City Theatrical Solution(s): **QolorFLEX® LED Tape, RGBNW, QolorFLEX 24x3A Dimmers, QolorFLEX SHoW DMX Neo® 4x2.5A Dimmers, and SHoW DMX SHoW Baby® 6**



[New York City Center](#) (NYCC) was founded 75 years ago with the mission of being New York City's leading center for dance and musical theater, dedicated

to making the arts accessible to the broadest possible audience. Directed by Sammi Cannold, NYCC's *Evita* examines the adored and reviled persona of Argentina's first lady, Eva Perón.

## CHALLENGES

As a leading center for dance and musical theatre in NYC, New York City Center puts on a wide range of productions annually, some of which call for certain lighting and scenic elements that can be re-purposed into following shows. The creative team behind *Evita* at NYCC planned to use five already purchased reels of QolorFLEX LED Tape, RGB+Natural White from a previous production to line five archways in the set design. They would also require additional reels of LED tape for other scenic elements, and would need them to be binned to match the exact lighting of the existing LED tape.

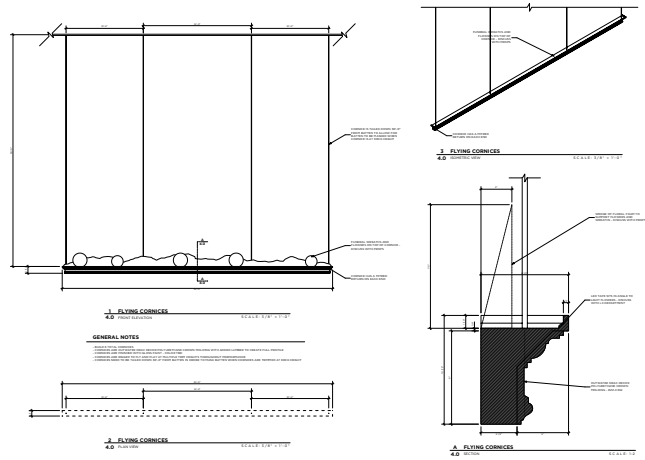
QolorFLEX LED Tape, RGBNW had originally been purchased for a production with lighting design by Mark Barton, in order to achieve the most flexibility in his design. For the *Evita* team, the combined LED tape installation would require a robust wireless DMX dimming solution that could also handle flexibility and movement across the stage.

## SOLUTION

The team used 21 reels of QolorFLEX LED Tape, RGBNW in total for the production of *Evita* at NYCC. The reels were used in combination with QolorFLEX 24x3A Dimmers and QolorFLEX SHoW DMX Neo Dimmers for dimming control, and SHoW DMX SHoW Baby 6 for wireless DMX control, all of which had been re-purposed from past productions.

**“We chose QolorFLEX because of its reliability, color quality, and affordability. The good thing about QolorFLEX is that it is tough and can be reused, so it is part of our repertory equipment now, for ongoing production use.”**

- Mark Mongold, Director of Production, New York City Center



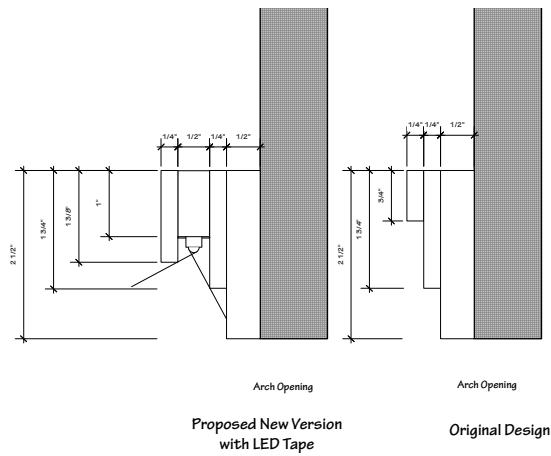
## WHITE DRESSES & FLYING CORNICES

The Director, along with the Scenic Designer, developed a unique concept for NYCC's *Evita*: to present white dresses during the show to represent Evita in her journey from innocent girl in a poor rural area to becoming the first lady of Argentina. The dress represented her body (or spirit) and was treated as her coffin for the funeral scene. The team used three dresses to create this concept on stage, one hanging in the air at the beginning of the show, one that the actress playing Evita wears, and one built as a prop that flies in on a second hanger over cornices, which is destroyed each night by the crowd in the final scenes of the show.

By using SHoW DMX Wireless DMX for control of the "flying" cornices, the team reduced their control and power bundle, resulting in a thin power wire down one of the aircraft cables, which provided the flexibility the cornices needed to move freely. This wireless DMX technology saved the team from the bulk of built-in batteries, and the logistics of charging and changing batteries in six flying cornices, which would require 12 hours of tech.

**"By using City Theatrical's wireless DMX for control on the cornices, we only had to run a thin power wire down one of the aircraft cables to the flying cornices, so there was no need for a thick control and power bundle."**

*- Mark Mongold, Director of Production, New York City Center*



## ARCH DESIGN

For *Evita* at NYCC, the creative team used QolorFLEX LED Tape was used to highlight all the edges of the stacked layers in the scenic design. The LED tape was mounted on the inside edge of the arches. It was chosen as a quick and inexpensive way to highlight the curves around the arch, and its natural flexibility saved them from needing to bend expensive extrusions to match curves around the arches.

The team also added a masking flap to the front luan layer of the stage so that the audience could not see the actual LEDs directly. They adjusted the relationship of the QolorFLEX LED tape to the edges of the molding profile so that the LED light could hit each layer or cause a shadow from each layer on to the next.

**“As a side benefit, the QolorFLEX LED tape lit actors coming through the arches in an interesting way, as well as international flags that were hung in the arches for one scene.”**

- Mark Mongold, Director of Production, New York City Center



To learn more about *Evita* at NYCC, visit: [nycitycenter.org/pdps/2019-2020/evita/](http://nycitycenter.org/pdps/2019-2020/evita/)



To learn more about QolorFLEX LED Tape, visit: [citytheatrical.com/products/led-tape-qolorflex](http://citytheatrical.com/products/led-tape-qolorflex)

